

Contents

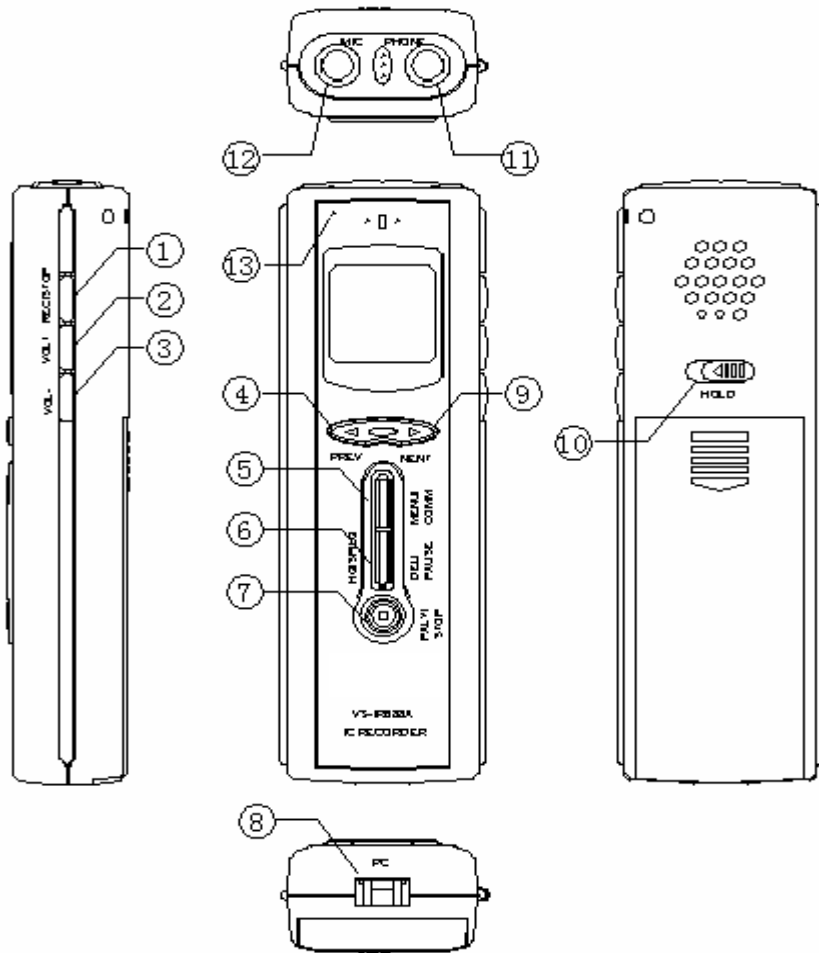
- For Safety..... page 1
- Contents..... page 2
- Main Features.....page 3
- Each name of VS-IR/588A688A..... page 4
- LCD indication., Insert batteries..... page 5
- Battery indication on LCD., Record/Pause/Stop..... page 6
- Play/Pause/Stop., Erase..... page 7
- Volume. Recording mode..... page 8
- Hold. Menu..... page 9
- Connection to other equipment..... page 11
- Others. page 12
- PC Connection..... page 13
- Attention., Main Spec list..... page 16

Main Features

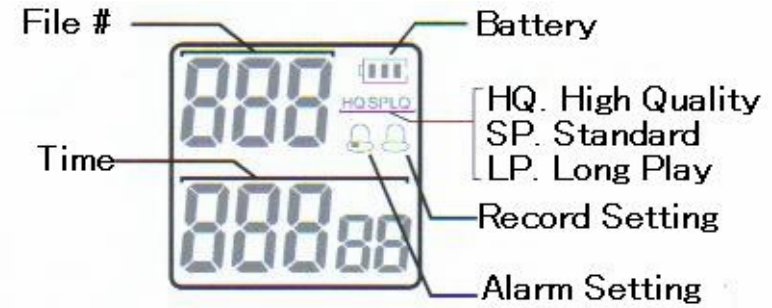
- 3kinds of sound quality. (HQ: High Quality./SP: Standard./LQ: Low & Long)
- VOS (Auto recording function.)
- Scope (Setting of microphone sensitivity)
- Setting of recording time.
- Addition of file number.
- Noise Reduction
- Time display.
- Alarm
- Timer recording.
- One Erase
- All Erase
- Auto Power Off
- Battery power indication
- Recording with external microphone
- Hearing with earphone or external speaker
- Digital Volume.
- Fast forward & fast back
- Many information on LCD.
- PC connection.

Each Name of VS-IR588A/688A

- 1, Rec./Stop. 2, Vol. + 3, Vol. - 4, Previous 5, Menu/Comm
 6, HQ/SP/LQ/Erase/Pause 7, Play/Stop 8, PC Jack 9, Next
 10, Hold 11, Phone Jack 12, microphone jack
 13, Recording indicator



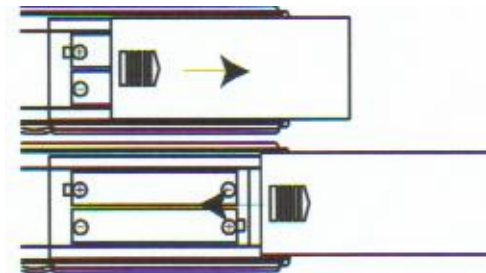
LCD indication



Insert Batteries

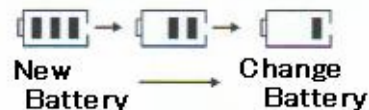
⚠ Insert +/- correctly.

- 1, Push & slide Battery Cover as below.
- 2, Insert 2 pcs. of new Alkaline batteries and close cover.



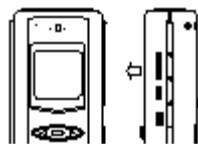
Battery indication on LCD.

When LCD indicates as below, cannot be recorded. Change new batteries.



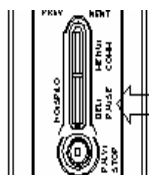
Record/Pause/Stop

- Direct internal microphone to the source and press "Rec./Stop" for 2seconds.



- Recording LED light on and start recording. File #, Recording time and recording mode are indicated on LCD.

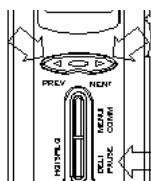
- If you want to "pause" in recording, press "HQ/SP/LQ/Eraser/Pause" button. "PAUSE" will be flashed on LCD. Press again for release pause and press "Rec./Stop" button again for stop recording



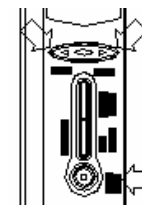
6

Play/Pause/Stop

- Select file # with "Previous" & "Next" button and press "Play/Stop" button for playing.



- Press "Play/Stop" again to stop playing.
- For pause in playing, press "HQ/SP/LQ/Eraser/Pause" button.
- For release the pause, press "HQ/SP/LQ /Eraser/Pause" button again.



ERASE

- ERASE 1file: Select file you want erase, and press "HQ/SP/LQ /Eraser/Pause" button for 2 seconds. "ERASE" will indicate on LCD and the file play automatically. During play the file, press "HQ/SP/LQ /Eraser/Pause" button again and the file will be erased. When you don't press "HQ/SP/LQ /Eraser/Pause" but other button, erase will be canceled.

7



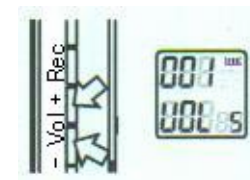
- ERASE all files: Press "HQ/SP/LQ /Eraser/Pause" button for 2 seconds. Press "NEXT" or "PREVIOUS" to select "All Erase" and press "HQ/SP/LQ /Eraser/Pause" button again to erase all files in memory. When you don't press "HQ/SP/LQ /Eraser/Pause" but other button, erase will be canceled.



VOLUME

Press VOL + for volume up, and press VOL - for volume down.

The volume level will indicate on LCD for 2 seconds.



RECORDING MODE

Press continuously "HQ/SP/LQ /Erase/Pause" button to select recording mode.

HQ, SP and LQ mode will indicate on LCD.

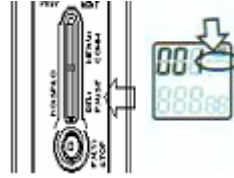
HQ: High Quality, 90/180 minutes will be recorded.

SP: Standard play, 320/640 minutes will be recorded.

LP: Long play. 440/880 minutes will be recorded.

8

* When you don't select mode, HQ mode will be set automatically.



PREVIOUS/NEXT

Press "PREV" button once for back file, and press "NEXT" button once to skip file.



ADD FILE No. in RECORDING

When recording time is very long, press "NEXT" button during recording to add new file No.



HOLD

Remaining the current function, use "HOLD". "HOLD" won't accept any other function.

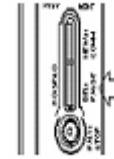


MENU

Press "MENU" button once for menu mode. MENU mode will change as below every one press.

9

- Remaining time for recording.
- ↓ Time setting.
- ↓ Recording time setting.
- ↓ Alarm setting.
- ↓ VOS setting.(Auto recording start.)
- ↓ SCOPE setting.(Microphone sensitivity.)
- ← NOISE setting.(Reduction of back-ground noise.)



① Remaining recording time

Press "menu" button and it's indicated remaining time LCD.

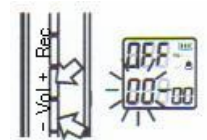


on

② Time setting (24 hours.)

Press "menu" button twice and time on LCD will flash. Press "Vol. +" and the time add 1 hour. Press "Vol. -" and the time deduct 1 hour.

Press "Next" or "Prev." for minutes. Press "Vol. +" or "Vol.-" for setting. Press "Menu" for confirm the time.



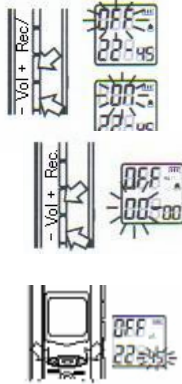
10

③ Recording time setting

- Press "Menu button" three times and time on LCD will flash.
- Press "Vol. +" or "Vol. -" for hour setting.



- Press "Send" or "Prev." for minutes. Press "Vol. +" or "Vol.-" for setting.
- After time setting, press "Send" or "Prev" for "On" or "Off" and press "Vol.+" or "Vol -" for selection.
- Press "Menu" button for confirmation.

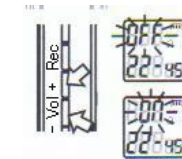


④ Alarm setting.

- Press "Menu button" four times and time on LCD will flash.
- Press "Vol. +" or "Vol. -" for hour setting.
- Press "Send" or "Prev." for minutes. Press "Vol. +" or "Vol.-" for setting.

11

- After time setting, press "Send" or "Prev" for "On" or "Off" and press "Vol.+" or "Vol -" for selection.
- Press "Menu" button for confirmation.



⑤ VOS

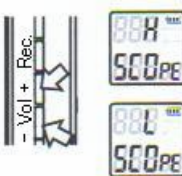
When there is no any sound, recording will stop automatically, and sound come, recording will start automatically.

- Press "Menu" five times and "VOS" ,"ON" and "Off" indicate on LCD. Press "Vol. +" or "Vol.-" for "On" or "Off"



⑥ SCOPE setting.(Internal Microphone sensitivity.)

Press "Menu" button six times. "SCOPE", "H" or "L" indicates on LCD. Select "H" or "L" with "Vol.



+" or "Vol.-" button. Press "Menu" button for confirmation.

H : Recording for far.

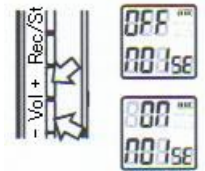
L : Recording for near.

12

⑦ NOISE setting.(Back-ground Noise reduction)

When there is many noise in a circumference, set NOISE

- * Press "Menu" six times and indicate "NOISE", "On" or "Off" on LCD. Set "On" or "Off" with "Vol +" or "Vol -" . Press "Menu" button for confirm.



Connection to other equipment.

① Recording from other player.

- Connect microphone jack of VS-IR588A/688A & earphone jack of other equipment with audio cable.
- Start recording VS-IR588A/688A
- Start playing of other player. (Vol. level is under middle.)



② Recording to other recorder.

- Connect earphone jack of VS-IR588A/688A & line-in jack of other recorder with audio cable.
- Start recording of other recorder.
- Start playing of VS-IR588A/688A.(Vol. level is around middle.)



③ External Microphone.

Connect external microphone to mic. jack.



④ Record Telephone conversation.

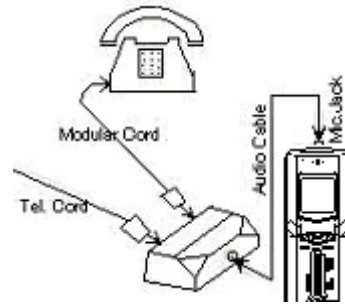
1, Connect line-in jack of IC recorder & telephone adapter with audio cable.

2, Take off telephone cord from telephone unit and connect telephone adapter.

3, Connect modular cable to telephone adapter & telephone unit.

4, You can record telephone conversation with IC recorder.

5, When you have telephone conversation, start recording.



Others.

- When inside memory is full, you cannot record anymore and it 's indicated "FULL" on LCD. Erase file you don't need and you can record again.
- When file No. is 127, you cannot record anymore and it is indicated "FULL" on LCD. Erase file you don't need and you can record again.



PC Connection.

1, Required a computer with WINDOWS system, communication disk & cable.

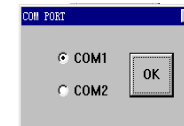
2, Copy three files (DVR.exe, Progress.dll, Transform.dll) from disk to PC.
(Note: If only DVR.exe, please select Windows setup/ File option/ View/ "display all files")

3, Connect the cable between computer and "PC" port of the IC recorder.

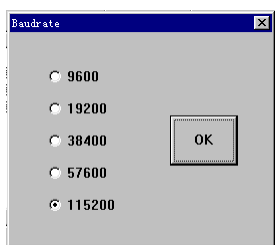
4, Operate DVR.exe (Use mouse to double click it.)



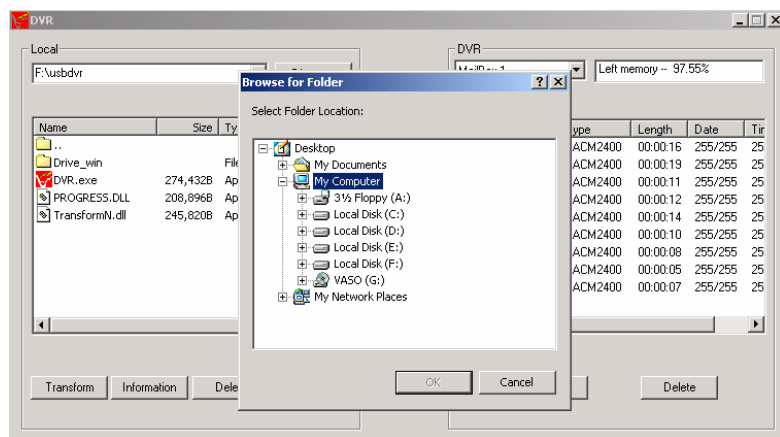
5, Click "Connect" button, then pop up windows with selectable COM1 and COM2. After selecting COM1 or COM2 according to serial port used, then click OK. (Note: Before connect, press MENU/COMM button on IC recorder more than 2 seconds, LCD on the IC recorder will display "PC")



6, Choose speed of transmission.: Press "Baudrate" button, choose speed of transmission., then press "OK"



7, Choose file folder : Click "Directory" button ,WINDOWS catalogue will appear, follow the WINDOWS to operate.

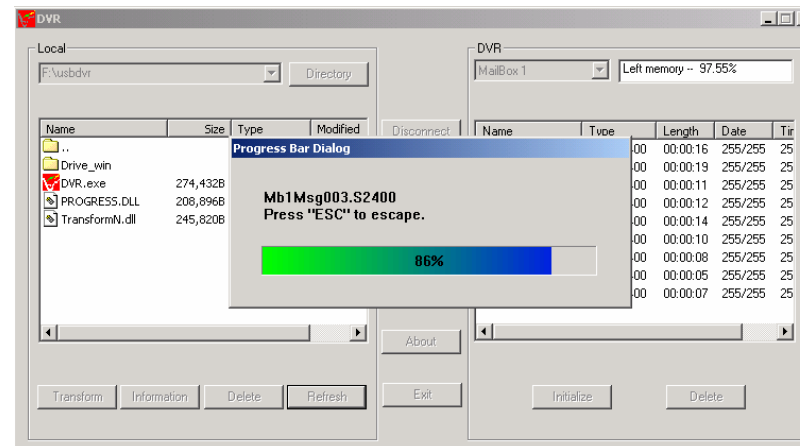


8, If you want to upload the content from IC recorder to PC, you should choose a folder first., then choose the segment you want to upload. Press "←" button to download the content from voice recorder to PC.

16

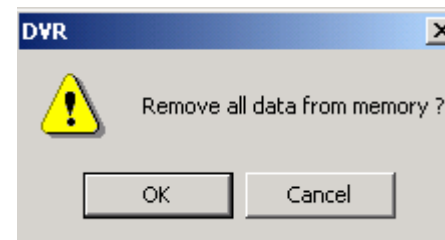
9, Download document : First choose folder, then choose left side to download document, and click "→" to do it.

10, Delete Message : If you want to delete content from the folder, first



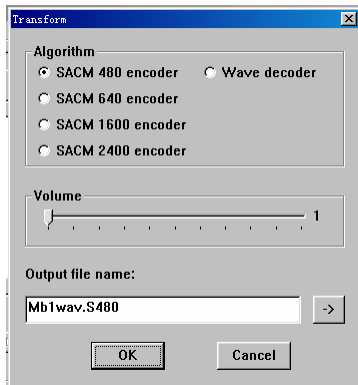
choose that segment on the left side, then click "Delete" button. If you want to delete content from the voice recorder, first choose that segment on the right side, then click "Delete" button.

11, Formatting the IC recorder : Click "Initializing". A reminder will come out, make sure you want to delete all content. (Note: After initializing, all content in the IC recorder will be lost.)



17

12, Message File format transmit : The function can transform S2400, S640 or S480 to Windows WAV format, vice versa. First choose a message from Windows on left side, click "Transform"



(Please adjust the volume to "3", transmit result will be better.)
 13, Exit communication: Click "Exit" or close Windows: Press MENU/
 COMM again.

Attention.



- Don't drop IC recorder.
- Don't keep high temperature(60°C) & low temperature(-10°C)
- Don't keep under sunlight.
- Don't keep high humidity such as bath & shower room.
- Don't keep dusty place.

Main Spec. List.

Flash memory		16 MB	32 MB
Recording Time	HQ mode	Est. 90 min.	Est. 180 min
	SP mode	Est. 320 min	Est. 320 min
	LP mode	Est. 440 min.	Est. 880 min

Max file No.	127
Output power	Max. 80mW/8 Ω
Temperature	0°C~40°C
Power source	AAA Alkaline x 2pcs.
Battery life	6 – 12 hours.
Frequency	500Hz – 3500Hz
Distortion	Below 10%
Recording source	Internal or external microphone
Including Accessories	Earphone, Audio cable, Battery, Instruction manual, Telephone cord Telephone adapter, CD driver, External Mic, 9pin Serial cable.